

HISPANIC NOTES
& MONOGRAPHS



CATALOGUE SERIES
SOROLLA—SKETCHES FOR
COLUMBUS LEAVING PALOS

<h1>HISPANIC</h1> <h2>NOTES & MONOGRAPHS</h2>	
<p>ESSAYS, STUDIES, AND BRIEF BIOGRAPHIES ISSUED BY THE HISPANIC SOCIETY OF AMERICA</p> <p>CATALOGUE SERIES</p>	



COLUMBUS LEAVING PALOS
New York. Thomas F. Ryan

SOROLLA

IN
THE COLLECTION OF
THE HISPANIC SOCIETY
OF AMERICA

SKETCHES FOR
COLUMBUS LEAVING PALOS



THE HISPANIC SOCIETY
OF AMERICA

NEW YORK

1926



COPYRIGHT, 1926, BY
THE HISPANIC SOCIETY OF AMERICA

CORNELL PUBLICATIONS PRINTING CO.
ITHACA, NEW YORK

COLUMBUS

I

PREFACE

These sketches were made for the painting *Columbus Leaving Palos*. The model chosen by Sorolla to pose as Columbus was the Duke of Veragua, a descendant of the gallant Admiral. Many of the sketches are based upon *La nao Santa María*, published by the *Comisión Arqueológica Ejecutiva*, Spain, 1892, at the time when reproductions of the vessels which sailed on the first voyage were constructed for the Fourth Centenary of Columbus. This collection of forty-two sketches was presented by Sorolla to The Hispanic Society of America.

HISPANIC NOTES

2	SOROLLA
	<p data-bbox="573 428 588 457">I</p> <p data-bbox="271 500 893 1042">It is night and the Admiral again takes his place by the lantern at the stern. The wind sweeps the folds of his brown cloak about him and blows the white hair back from his face. The light from the lantern casts a red glow upon him. Beyond the ship one of the caravels rolls in the wash of the seas. This may be shortly after sunset, for "He had also ordered that the vessels should all unite at sunrise and sunset, because these two times are more suitable for seeing a long distance on account of the disappearance of the mists" (1).</p> <p data-bbox="271 1065 893 1127">The canvas is pieced. Oil on canvas. Height 137 cm.—Width 118.5 cm.</p>
	HISPANIC NOTES

COLUMBUS

3



Ar8

AND MONOGRAPHS

II

A sturdy figure in his short brown cloak, Columbus stands on deck, his left hand grasping the rigging. Behind him gray sails fill in the wind. The lower half of the picture is in shadow, but a strong light falls upon the figure of Columbus. His face is illuminated; he gazes across the sea as though already the land to the west had appeared on the horizon. This is the Columbus of the first voyage, as yet untouched by shame and despair.

Oil on canvas. Height 150 cm.—Width 92.5 cm.

COLUMBUS

5



A19

AND MONOGRAPHS

6	SOROLLA
	<p data-bbox="572 427 617 456">III</p> <p data-bbox="282 500 906 873">Columbus looks intently ahead, his hand resting upon the gunwale. He wears a dark brown cloak. Las Casas says of him, ". . . because he was very devoted to Saint Francis, he dressed in brown . . ." (2). Fastened to the gunwales are the coats of arms (unfinished) of Castilla and León and of Aragón-Sicily. Beyond the gray sail in the background is seen blue sky.</p> <p data-bbox="288 894 906 959">Oil on canvas. Height 150 cm.—Width 106.5 cm.</p>
	HISPANIC NOTES

COLUMBUS

7



A20

AND MONOGRAPHS



8	SOROLLA
	<p data-bbox="588 451 625 483">IV</p> <p data-bbox="293 524 913 857"> “And he sailed on his course to the West.” The Admiral is seen on the poop deck of the <i>Santa María</i>. Beyond the sweep of the lateen sail is a sky of translucent blue. A pink light as of dawn casts a reflection on the gray sail. Fastened to the gunwale is the coat of arms of Aragón-Sicily. </p> <p data-bbox="293 873 913 946"> Oil on canvas. Height 149.5 cm.—Width 124 cm. </p>
	HISPANIC NOTES

COLUMBUS

9



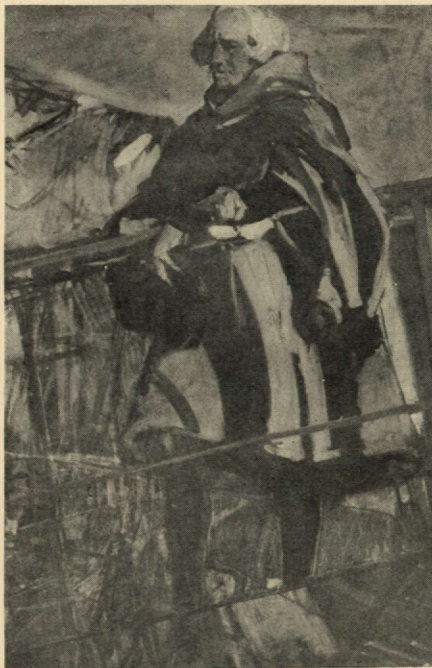
A21

AND MONOGRAPHS

10	SOROLLA
	<p data-bbox="578 435 605 467">V</p> <p data-bbox="277 508 903 1057"> Again on the deck of his flagship, Columbus rests his arms on the gunwale, his cap in his left hand. Gray sails and blue sky form the background. Clad in a light brown cloak, his white hair uncovered, Columbus here appears much as Las Casas described him, “. . . he was tall, above the average; his face elongated and commanding; his nose aquiline; his eyes blue; his colouring fair, verging on the florid; his beard and hair, when he was a youth, blond, although they turned white very early because of his troubles. . .”(3). </p> <p data-bbox="277 1073 903 1138"> Oil on canvas. Height 122.5 cm.—Width 79.8 cm. </p>
	HISPANIC NOTES

COLUMBUS

II



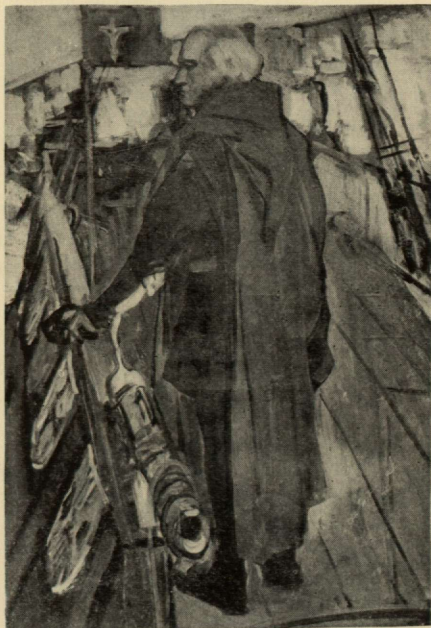
A22

AND MONOGRAPHS

VI

The Admiral stands on the starboard side of the ship near a royal standard. He is clad in dark hose and a dark brown doublet, the sleeves of which are slashed showing white material. A long brown cloak falls in many folds to his heels. Shields are fastened to the gunwale, where a falconet is mounted. At the right beyond the ship gleam the white sails of one of the caravels.

Oil on canvas. Height 96.2 cm.—Width 66.2 cm.

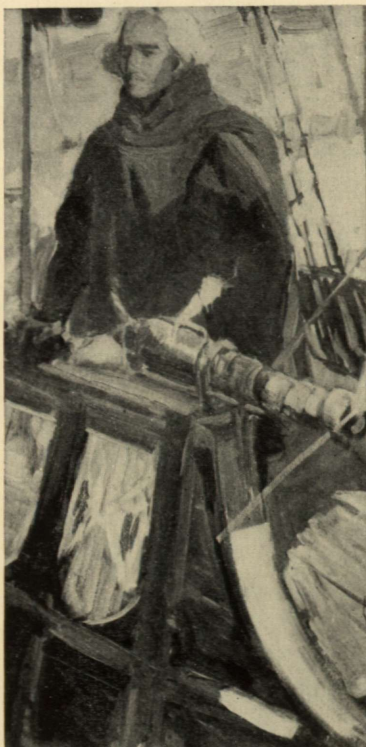


A23

14	SOROLLA
	<p>VII</p> <p>Clad in his brown cloak, Columbus halts by the gunwale, upon which is mounted a falconet. The coats of arms of Aragón-Sicily and of Castilla and León add brilliant touches of colour. Sunlight falls across the deck. The blue sky forms a brilliant background. It is one of those warm and perfect days described in the Admiral's Journal when the weather was like April in Andalucía.</p> <p>Oil on canvas. Height 104.5 cm.—Width 52.5 cm.</p>
	HISPANIC NOTES

COLUMBUS

15



A24

AND MONOGRAPHS

VIII

A gray shadow hardly distinguishable from the darkness surrounding him, the Admiral watches on deck at night. A light which seems to come from a distance casts a radiance, pale and unearthly, upon his cloaked figure. He faces steadfastly toward the darkness beyond the ship. Often on the voyage he forgot sleep, and here his tense figure seems alert for any danger which may threaten his little fleet.

Oil on canvas. Height 115 cm.—Width 61.5 cm.

COLUMBUS

17



A25

AND MONOGRAPHS

IX

With his back to the mainsail, which bears a red cross, Columbus faces the stern of his ship. He wears black hose and shoes and a short brown cloak with a hood which could be drawn over the head in stormy weather. To the right a falconet is mounted on the gunwale. Beyond the blue-gray sea is a sunset sky of lemon yellow. Blue shadows cast by the sail accentuate his sharply cut features.

Oil on canvas. Height 109.5 cm.—Width 73.3 cm.

COLUMBUS

19



A26

AND MONOGRAPHS

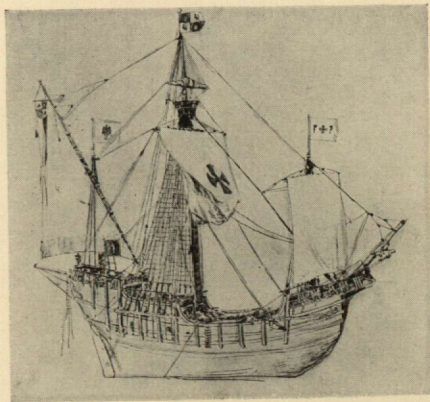
X

Sketch of the *Santa María*. On Christmas Eve, 1492, the *Santa María* went aground off the Island of Santo Domingo. In an entry in his Journal (December 26th) it is stated that “. . . the ship was very heavy and not fitted for the purpose of discovery. And the taking of such a ship he says was due to the people of Palos, who did not fulfil what the King and Queen had promised him . . .” (4). After unloading the *Santa María* and leaving some men to guard her cargo, the Admiral returned to Spain on the *Niña*.

Pen and ink on architect's linen. Height 37.4 cm.—Width 40.5 cm.

COLUMBUS

21



A345

AND MONOGRAPHS

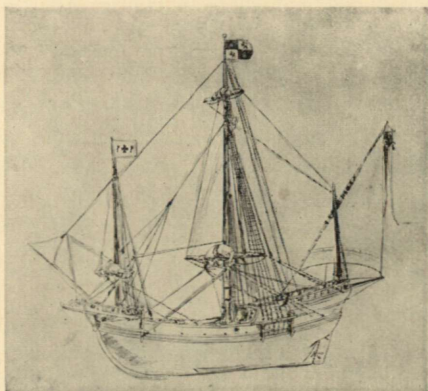
XI

Sketch of the *Pinta*. In the Journal (October 11th) one reads, "And because the caravel *Pinta* was the best sailor and was going ahead of the Admiral, land was discovered by her people and the signs which the Admiral had ordered were made. A sailor called Rodrigo de Traina [*i.e.* Triana] saw this land first, although the Admiral at 10 o'clock at night being in the stern forecastle . . . saw a light, but it was so concealed that he would not declare it to be land . . ." (5). And so they came to the New World.

Pen and ink on architect's linen. Height 37.3 cm.—Width 41 cm.

COLUMBUS

23



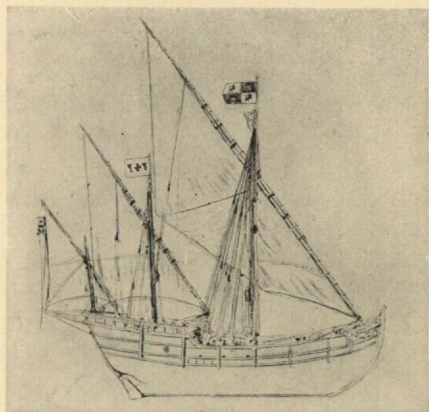
A346

AND MONOGRAPHS

XII

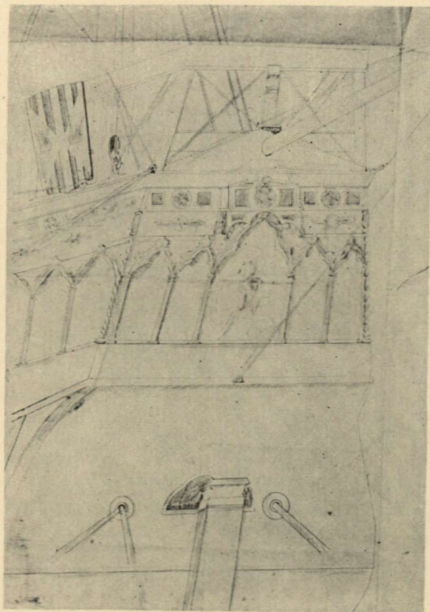
Sketch of the *Niña*. On October 7th the people of the *Niña* thought that they saw land, and the Journal relates that, "On this day at sunrise, as they were all sailing as fast as possible in order to see land first and enjoy the reward which the Sovereigns had promised to whomever should first see land, the caravel *Niña* which was ahead on account of being a fast sailor, raised a banner on top of the mast and fired a lombard as a signal that they saw land, because the Admiral had ordered this to be done"(6). But it was not until October 12th that land was reached.

Pen and ink on architect's linen. Height 35 cm.—Width 35.5 cm.



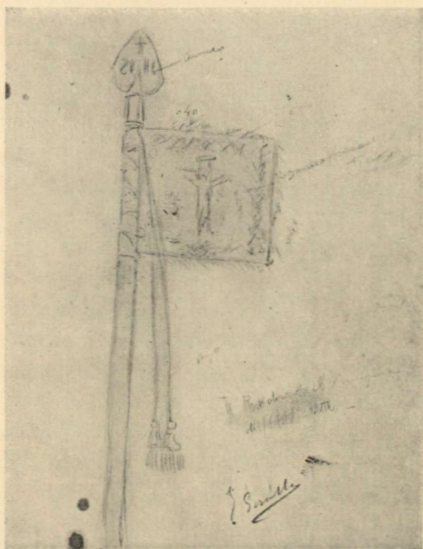
A344

26	SOROLLA
	<p data-bbox="576 444 650 477">XIII</p> <p data-bbox="299 516 923 1019">Sketch of the poop of the <i>Santa María</i> with the coat of arms of Aragón-Sicily. "The executive Commission . . . considered it suitable to decorate the poop with the ornamentation of the period, with a little raised work forming a canopy, where is sheltered the image of the Virgin Our Lady, as it was the custom from the time of D. Alfonso el Sabio to place it on vessels of a certain importance or which were constructed with a definite object" (7).</p> <p data-bbox="301 1040 923 1105">Right margin torn. Pen and ink on paper. Height 80.5 cm.—Width 57 cm.</p>
	HISPANIC NOTES



A317

28	SOROLLA
	<p data-bbox="588 451 656 483">XIV</p> <p data-bbox="308 524 927 938">Sketch of a royal standard. "The same Diary states on December 18th that among the things which the Admiral exhibited. . . were <i>the royal banners and the others of the cross</i>. Among the first were included. . . the royal standard, the special pennant of the Captains general of sea and land which was a square of crimson damask attached to the shaft of a lance, a crucifix painted on the cloth" (8).</p> <p data-bbox="308 959 927 1084">Pencil on paper. Signed at right: <i>J Sorolla</i>. At right and upper right: Notes in pencil. On back: Indelible pencil marks. Height 28.9 cm.—Width 22.6 cm.</p>
	HISPANIC NOTES

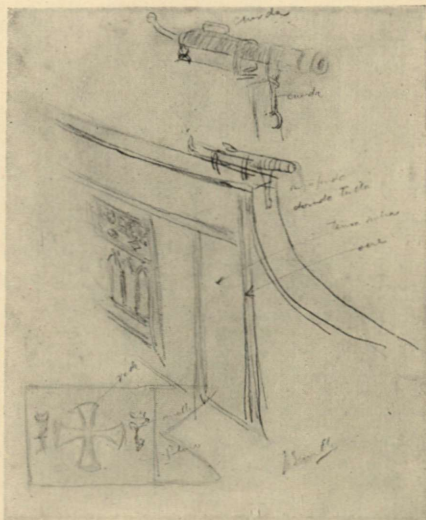


A331

30	SOROLLA
	<p data-bbox="570 451 624 488">XV</p> <p data-bbox="288 526 909 1110">Sketch showing a falconet mounted on the gunwale of the <i>Santa María</i>, at the left the flag of the Green Cross, and at the upper right another falconet. The flag, which was the especial one of the enterprise, is mentioned in the Journal in an account of the first landfall. "The Admiral took the royal banner and the two captains had two banners of the Verde Cruz, which the Admiral carried on all the ships as a sign, with an F and a Y. The crown of the Sovereigns surmounted each letter and one was one side of the ✚ and the other the other side" (9).</p> <p data-bbox="288 1133 909 1230">Pencil on paper. Signed at right: <i>J Sorolla</i>. At upper right and lower left: Notes in pencil. Height 27.2 cm.—Width 22.6 cm.</p>
	HISPANIC NOTES

COLUMBUS

31



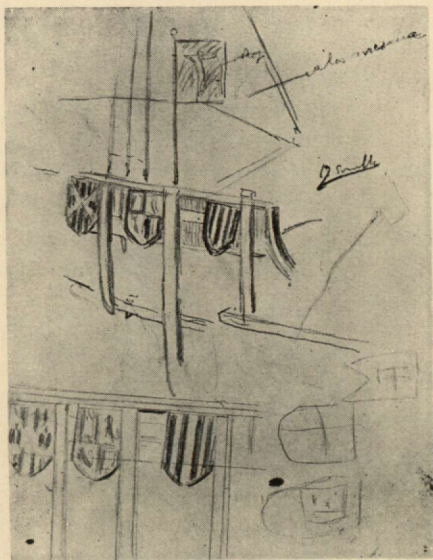
A319

AND MONOGRAPHS

XVI

Sketch showing a royal standard and, fastened to the gunwales, the shields of Aragón-Sicily, Castilla and León, and Aragón. In the Journal (December 18th) is written, "Then at dawn he ordered the ship and the caravels decorated with arms and banners for the festival . . ." (10). In a painting (15th century) in the parish church, Zumaya, may be seen Castilian and Portuguese vessels decorated with shields.

Pencil on paper. Signed at upper right: *J Sorolla*. At upper right: Notes in pencil. Height 28.1 cm.—Width 22.5 cm.



A315

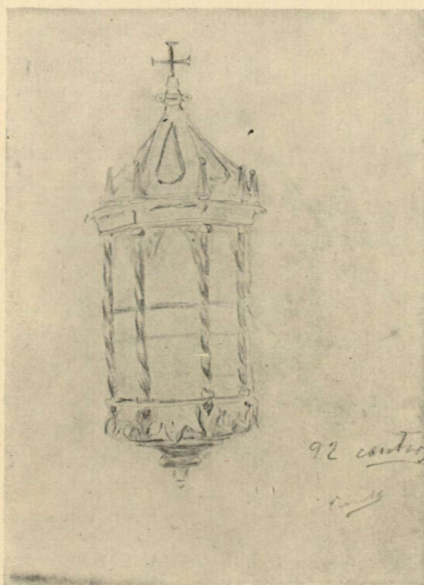
AND MONOGRAPHS



XVII

This sketch shows the Admiral's lantern as it was reconstructed. The lantern, a model of which is in the *Museo Naval*, Madrid, resembles in design the gilded wooden lanterns of the sixteenth century which may be seen in the *Real Armería*, Madrid. "In early times plates of talc protected the wax taper; afterwards panes of glass were adopted. . . . Apart from the lantern at the stern there was no other light on the ship than that of the helmsman. . . ." (11).

Pencil on paper. Signed at right: *J Sorolla*. At right: Notes in pencil. On back: Pencil marks. Height 30.3 cm.—Width 22.7 cm.



A330

36	SOROLLA
	<p data-bbox="547 440 643 475">XVIII</p> <p data-bbox="280 516 915 1101"> Sketch of a detail of the painting, <i>Virgen de los Conquistadores</i>, attributed to Alejo Fernández (1470?-1543?). The picture was at one time the central panel of an altarpiece in the <i>Casa de Contratación</i>, Sevilla. It is now in the <i>Prado</i>, Madrid. In the sketch the head at the right is a detail from one of the figures at the Virgin's right in the large painting. The ruddy complexion and blond hair make it seem possible that this is a portrait of Columbus. The head at the left in the sketch is a detail of one of the figures at the Virgin's left in the painting. </p> <p data-bbox="280 1122 915 1252"> Oil on cardboard. At upper left: <i>Estudio hecho del cuadro La Virgen de los M Mareant [es] Alcazar de Sevilla 1910</i>. Height 19 cm.—Width 23.9 cm. </p>
	HISPANIC NOTES

COLUMBUS

37



A334

AND MONOGRAPHS

XIX

Sketch of a detail of the painting, *Virgen de los Conquistadores*, attributed to Alejo Fernández. This sketch shows a detail of one of the figures kneeling at the Virgin's left in the large painting.

Pencil on paper. At right: *Alejandro Fernandez 1505. Sevilla Cristobal Colon!! Alcazar Sevilla 1909.* Height 29.1 cm.—Width 21.8 cm.



A328



A335

XX

The sketch is of a detail, from the painting attributed to Fernández, of one of the kneeling figures at the Virgin's right and of the man next to him in the red cap worn by sailors at the time of Columbus.

Pencil on paper. At left: *Colon!!* At right: Notes in pencil. Height 21.7 cm.—Width 29.1 cm.



A342

XXI

Pencil on paper. Signed at upper right: *J. Sorolla*. Water-mark: *A. S. S.* Height 34 cm.—Width 23.2 cm.

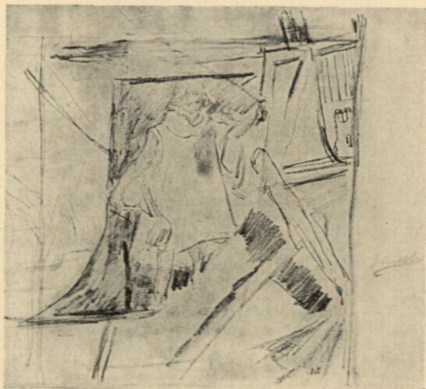
AND MONOGRAPHS



A327

XXII

Pencil on paper. Signed at right: *J Sorolla*. Water-mark: *Robraño*. On back: Sketch in pencil of the figure of Columbus. Height 22 cm.—Width 27.1 cm.



A332

XXIII

Pencil on paper. Signed at right: *J. Sorolla*. Water-mark: *Robraño*. Height 23.2 cm.—Width 27 cm.

AND MONOGRAPHS



A325

XXIV

Pencil on paper. Signed at left: *J. Sorolla*.
Water-mark: *Robraño*. Height 22.8 cm.—
Width 28.5 cm.



A340

XXV

Pencil on paper. Signed at right: *J Sorolla*. Water-mark: *A. S. S.* Height 34.2 cm.—Width 23.3 cm.

AND MONOGRAPHS



A341

XXVI

Pencil on paper. Signed at right: *J. Sorolla*.
Water-mark: *A. S. S.* On back: Pencil
marks. Height 34.2 cm.—Width 23.4 cm.

HISPANIC NOTES



A320

XXVII

Pencil on paper. Signed at upper left: *J Sorolla*. Water-mark: *Robraño*. Height 23.3 cm.—Width 20.9 cm.

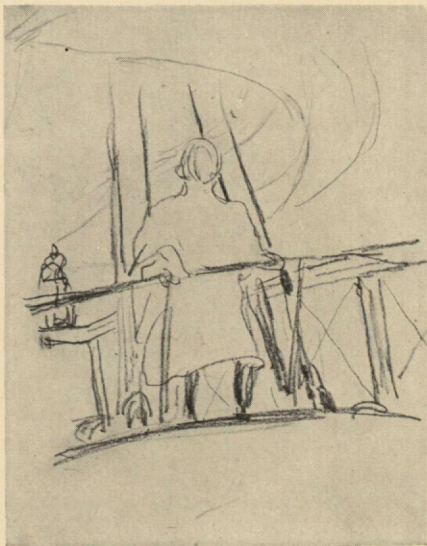


A333

XXVIII

Pencil on paper. Signed at upper right: *J Sorolla*. Height 19 cm.—Width 13.3 cm.

HISPANIC NOTES

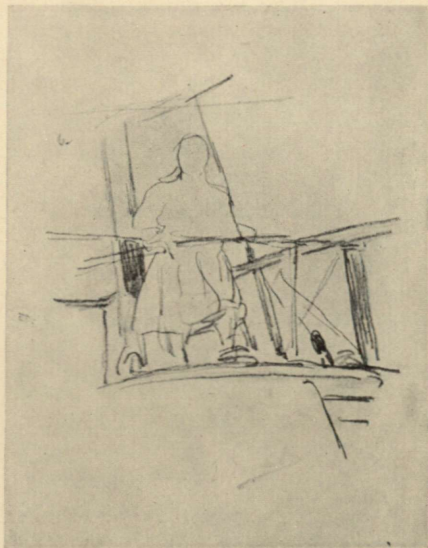


A321

XXIX

Pencil on paper. Signed at lower centre: *J Sorolla*. Height 19.2 cm.—Width 15.7 cm.

AND MONOGRAPHS



A322

XXX

Pencil on paper. Signed at right: *J Sorolla*.
Height 19 cm.—Width 15.7 cm.

COLUMBUS

51



A343

XXXI

Pencil on paper. Signed at right: *J Sorolla*.
Water-mark: *A. S. S.* Height 34 cm.—Width
23.2 cm.

AND MONOGRAPHS

52	SOROLLA
	<p data-bbox="553 423 667 456">XXXII</p> <p data-bbox="298 488 919 610">Pencil on paper. Signed at upper left: <i>J Sorolla</i>. Water-mark: <i>A. S. S.</i> On back: Sketch in pencil of the figure of Columbus. Height 33 cm.—Width 20.6 cm.</p>
	HISPANIC NOTES

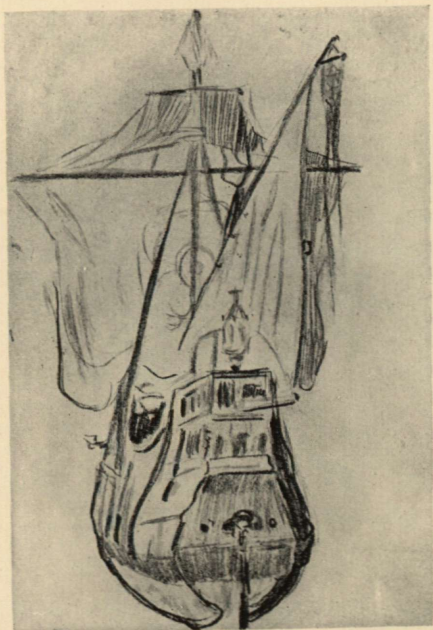


A326

54	SOROLLA
	<p data-bbox="526 435 653 467">XXXIII</p> <p data-bbox="280 509 899 670">Sketch showing the <i>Santa María</i> outward bound. She is under full sail, and the flags float from her mast heads. The Admiral's lantern is high upon the stern.</p> <p data-bbox="280 691 899 756">Pencil on paper. On back: Notes in pencil. Height 18.3 cm.—Width 12.7 cm.</p>
	HISPANIC NOTES

COLUMBUS

55



A337'

AND MONOGRAPHS

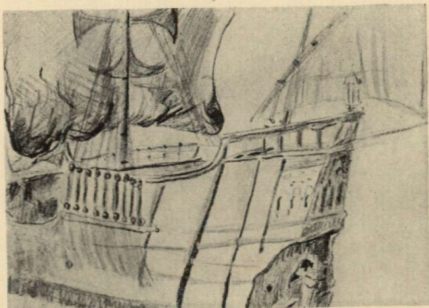
XXXIV

Sketch showing the ship from the port side. Her mainsail is adorned with a large cross. In the fifteenth and sixteenth centuries crosses and coats of arms were used to decorate the sails of vessels.

Pencil on paper. On back: Notes in pencil. Height 12.8 cm.—Width 18.3 cm.

COLUMBUS

57



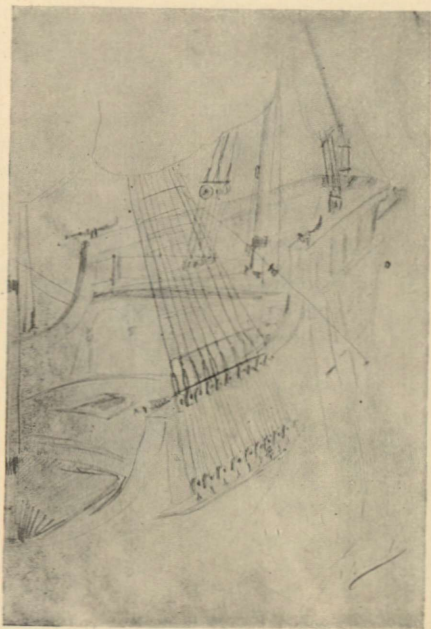
A336

AND MONOGRAPHS

58	S O R O L L A
	<p data-bbox="539 456 648 488">XXXV</p> <p data-bbox="283 529 905 773">Sketch of the <i>Santa María</i> from the port side, showing the <i>tolda</i>, or deck beneath which slept the crew, and the <i>toldilla</i>, or poop deck, which, covering the round-house or cabin of the commander, is reached by a short flight of steps.</p> <p data-bbox="283 797 905 862">Pencil on paper. Signed at right: <i>J Sorolla</i>. Height 26.3 cm.—Width 18 cm.</p>
	H I S P A N I C N O T E S

COLUMBUS

59

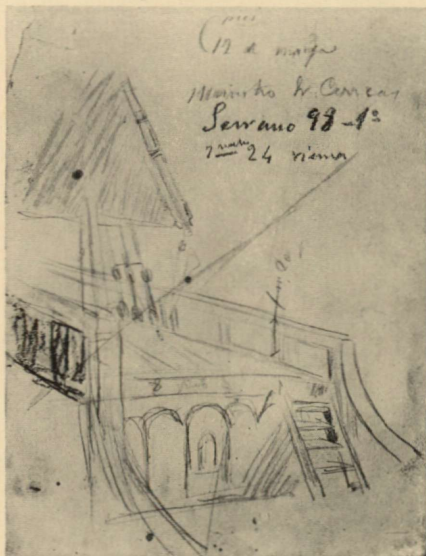


A318

AND MONOGRAPHS



60	S O R O L L A
	<p data-bbox="547 448 671 480">XXXVI</p> <p data-bbox="296 521 919 643">Sketch showing the ship from the star-board side, the roundhouse, the poop, and part of the lateen sail.</p> <p data-bbox="296 659 919 789">Pencil on paper. At upper right: Notes in pencil. On back: Sketch in pencil of the figure of Columbus and notes in pencil. Height 28.9 cm.—Width 22.6 cm.</p>
	H I S P A N I C N O T E S

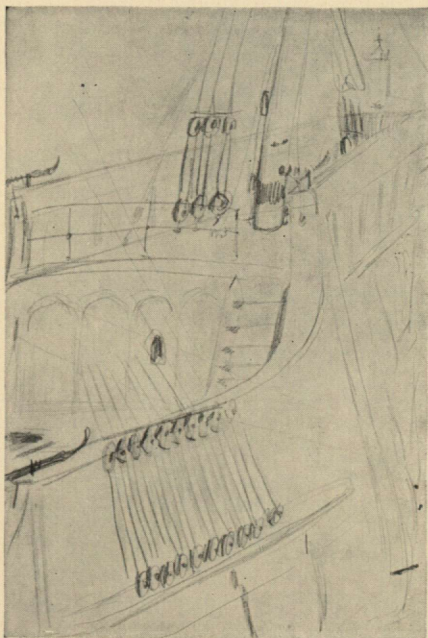


A314

62	SOROLLA
	<p data-bbox="529 440 664 472">XXXVII</p> <p data-bbox="285 513 904 586">Sketch of the <i>Santa María</i> from the port side.</p> <p data-bbox="285 610 904 675">Pencil on paper. Signed at right: <i>J Sorolla</i>. Height 26.2 cm.—Width 18.1 cm.</p>
	HISPANIC NOTES

COLUMBUS

63



A316

AND MONOGRAPHS

64	SOROLLA
	<p data-bbox="515 444 667 477">XXXVIII</p> <p data-bbox="279 516 901 591">Sketch looking from the stern to the bow of the <i>Santa María</i>.</p> <p data-bbox="279 613 901 711">Pencil on paper. At upper right and upper left: Notes in pencil. Height 24.5 cm.—Width 19 cm.</p>
	HISPANIC NOTES

COLUMBUS

65



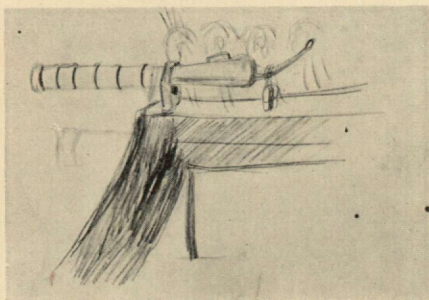
A323

AND MONOGRAPHS

66	S O R O L L A
	<p data-bbox="521 418 650 451">XXXIX</p> <p data-bbox="270 492 888 740">Sketch showing a falconet. "The falconets or culverin of small bore, secured on the gunwale . . . were of beaten iron, like the lombards . . ." (12). The reconstructed <i>Santa María</i> carried six falconets copied from authentic models.</p> <p data-bbox="270 760 888 824">Pencil on paper. On back: Notes in pencil. Height 12.7 cm.—Width 18.4 cm.</p>
	H I S P A N I C N O T E S

COLUMBUS

67



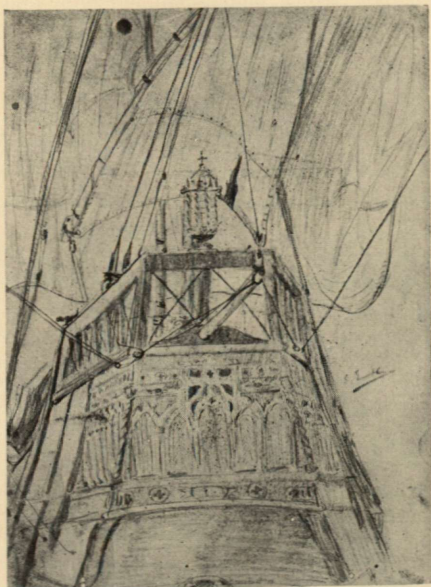
A339

AND MONOGRAPHS

68	SOROLLA
	<p data-bbox="567 435 623 474">XL</p> <p data-bbox="284 506 903 587">Sketch showing the poop of the <i>Santa María</i>.</p> <p data-bbox="284 604 903 701">Pencil on paper. Signed at right: <i>J Sorolla</i>. On back: Sketch in pencil of the figure of Columbus. Height 30.3 cm.—Width 22.7 cm</p>
	HISPANIC NOTES

COLUMBUS

69



A329

AND MONOGRAPHS

70	SOROLLA
	<p data-bbox="553 440 619 472">XLI</p> <p data-bbox="270 513 897 634">Sketch showing the gonfalon which flew from the mizzen lateen sail and bore the arms, transposed, of Castilla and León.</p> <p data-bbox="270 654 897 748">Pencil on paper. At upper centre and lower centre: Notes in pencil. Height 17.2 cm.—Width 12.5 cm.</p>
	HISPANIC NOTES

COLUMBUS

71



A324

AND MONOGRAPHS

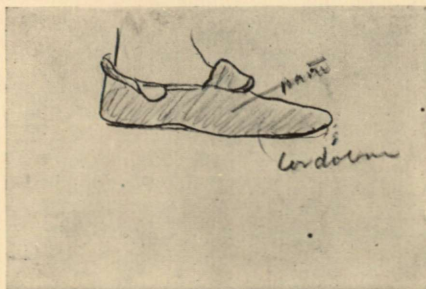
XLII

Sketch showing a shoe. From the Journal (December 18th) it appears that Columbus gave red shoes to the cacique when he dined with him on board the *Santa María*.

Pencil on paper. Water-mark: *Rêves S. J. G. B.* At right: Notes in pencil. Height 13 cm.—Width 20.3 cm.

COLUMBUS

73



A338

AND MONOGRAPHS

74	NOTES
	<p style="text-align: center;">NOTES</p> <p>(1) Thacher, John Boyd. <i>Christopher Columbus</i>. New York and London, 1903-04. v. 1, p. 528.</p> <p>(2) Casas, Bartolomé de las. <i>Historia de las Indias</i>. Madrid, 1875-76. v. 2, p. 89, tr.</p> <p>(3) — — v. 1, p. 43-44, tr.</p> <p>(4) Thacher. v. 1, p. 628.</p> <p>(5) — — p. 530.</p> <p>(6) — — p. 528.</p> <p>(7) Spain. <i>Comisión arqueológica ejecutiva. La nao Santa María</i>. [Madrid? 1892?] p. 13, tr.</p> <p>(8) — — p. 79, tr.</p> <p>(9) Thacher. v. 1, p. 532.</p> <p>(10) — — p. 612.</p> <p>(11) Spain. <i>Comisión arqueológica ejecutiva</i>. p. 84-85, tr.</p> <p>(12) — — p. 51, tr.</p>
	HISPANIC NOTES

GB L 264

Sig.: G.B. L. 264

Tít.: Sorolla in the collection of t

Aut.: Hispanic Society of America

Cód.: 1008432

